



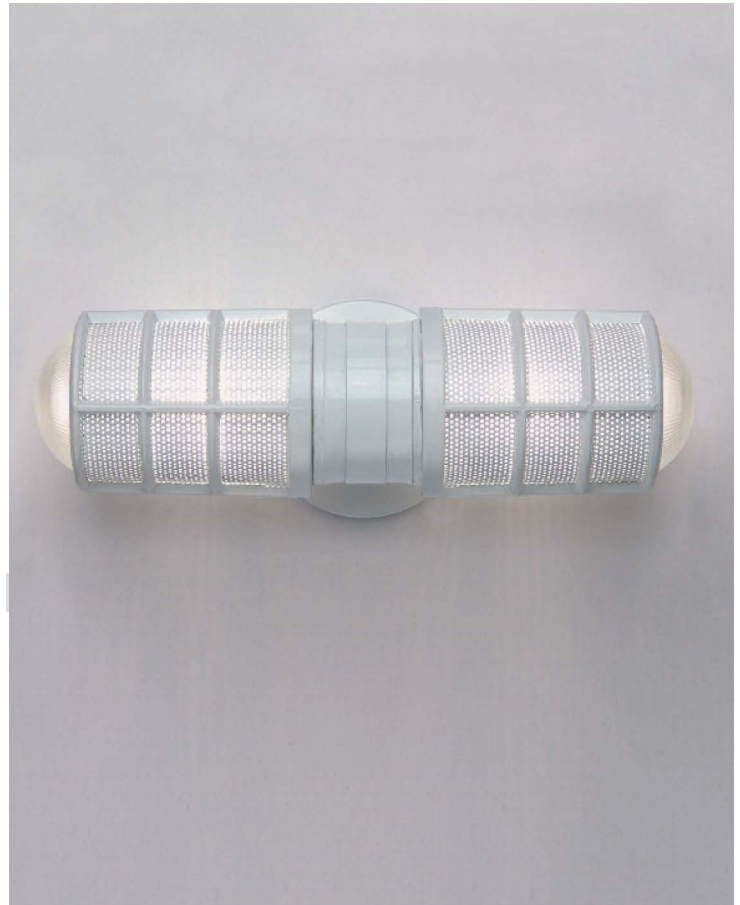
# d1017

SOFT INDUSTRIAL WALL FIXTURE

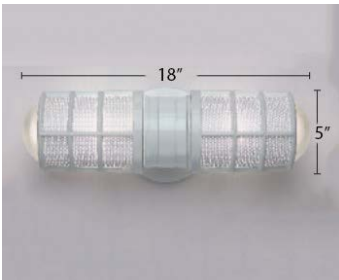
PROJECT: \_\_\_\_\_  
 TYPE: \_\_\_\_\_  
 QUANTITY: \_\_\_\_\_  
 NOTES: \_\_\_\_\_

## SPECIFICATION

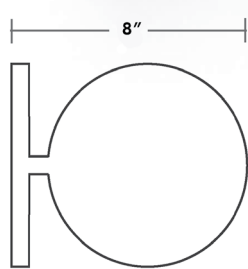
<b>CONSTRUCTION</b>	Cast aluminum grill and fittings
<b>ENCLOSURE</b>	Clear glass enclosure
<b>CANOPY</b>	5" diameter x 1/2" deep canopy
<b>MOUNTING</b>	Standard wall junction box
<b>FINISH</b>	Powder coat paint
<b>VOLTAGE</b>	120V or 277V
<b>LIGHT SOURCE</b>	Dedicated LED or medium base socket
<b>DIMMING</b>	Non-dimming, 0-10V, ELV, or TRIAC
<b>SHADE DIMENSION</b>	18" Width x 5" Height
<b>DEPTH</b>	8"
<b>CODE COMPLIANCE</b>	UL listed, cUL (ETL/ETLc for LED) certified for dry locations



## DIMENSIONS

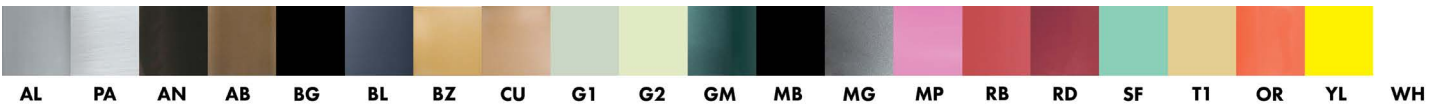


## DEPTH



## ORDERING INFORMATION

MODEL	LAMPING	VOLTAGE	FINISH	OPTIONS
d1017	<b>2LED8<sup>2</sup></b> 8W LED, 1472 TOTAL LUMENS <b>2M100<sup>5</sup></b> 100W MAX, MEDIUM BASE, A TYPE <b>2M200<sup>5</sup></b> 200W MAX, MEDIUM BASE, A TYPE	<b>120'</b> 120V <b>277</b> 277V	<b>PAINTED FINISHES</b> <b>BG</b> BLACK GLOSS <b>BL</b> METALLIC BLUE <b>RD</b> METALLIC RED <b>CU</b> METALLIC COPPER <b>T1</b> LIGHT TAN <b>G2</b> MEDIUM GREY <b>GM</b> METALLIC GREEN <b>MB</b> MATTE BLACK <b>MG</b> METALLIC GREY <b>YL</b> BRIGHT YELLOW <b>BC</b> BLACK CRINKLE <b>G1</b> LIGHT GREY <b>OR</b> ORANGE	<b>RG<sup>3</sup></b> RIBBED GLASS ENCLOSURE <b>PS<sup>3</sup></b> PERFORATED METAL SLEEVE <b>DIM<sup>4</sup></b> DIMMING: 0-10V, TRIAC, OR ELV <b>WET</b> WET LOCATION UL/CUL LISTED  <b>WH</b> WHITE GLOSS <b>T2</b> MEDIUM TAN <b>AN</b> METALLIC ANTHRACITE <b>SF</b> SEAFOAM <b>MP</b> MAGENTA PINK <b>BZ</b> METALLIC BRONZE <b>SPECIAL COLOR FINISH</b> <b>SCF</b> _____
<b>NOTES</b> 1. FIXTURES ARE FACTORY PREWIRED FOR 120V UNLESS OTHERWISE SPECIFIED. 2. 3000K IS THE STANDARD COLOR TEMPERATURE UNLESS OTHERWISE SPECIFIED; ALSO AVAILABLE IN 2700K, 3500K, AND 4000K 3. RIBBED GLASS AND PERFORATED METAL SLEEVE CANNOT BE ORDERED TOGETHER 4. COMPATIBLE WITH DEDICATED LED LAMPING; SPECIFY DIMMING PROTOCOL: 0-10V, ELV, OR TRIAC 5. FIXTURE SUPPLIED LESS LAMPS; LAMPS MAY BE ORDERED FROM D'AC 6. FOR MODIFICATIONS TO DIMENSIONS, ELECTRICAL REQUIREMENTS, AND OTHER SPECIAL ORDERS, PLEASE CONTACT YOUR D'AC REPRESENTATIVE				



Phone: 203.775.0172  
 P.O. Box 165 | 20 Pocono Road | Brookfield CT 06804  
 daclighting.com | cs@daclighting.com

As part of d'ac's continuing efforts to improve the product line, fixtures may be modified or discontinued without prior notice